

FITTING INSTRUCTIONS AND TEMPLATE

(D) SCHABLONE
(F) GABARIT

(NL) SJABLOON
(E) PLANTILLA

FOR WOODEN DOORS AND PLASTIC PANELS

1. It is recommended that the bottom of the hole is approximately the same level as your pet's stomach.

2. Place this template in desired position on door and draw round completely.

3. Prior to cutting the hole, drill 2 holes of approximately $\frac{1}{4}$ " (6mm) diameter in top corners.

4. Use an electric jig-saw to cut along the inside of the drawn line. Be careful to cut hole square to the door, particularly with thicker doors. Ensure that the frames are free-fitting in the hole.

5. Determine the thickness of the panel in your door (t) (see fig. 5).

For Panels ① 0 - $\frac{7}{8}$ " (0-23mm):

6. Position interior frame on inside of door and mark the 4 screw positions.

7. Remove frame and drill screw clearance holes in panel to approx. $\frac{3}{16}$ " (4mm) diameter.

8. Select the appropriate screws for the panel in your door (see fig. 8).

9. Then, using the appropriate screws and working from the inside of the house, tighten the interior frame to the exterior frame. When happy with installation cover screw heads with caps supplied.

For Panels ① $\frac{7}{8}$ " + (24mm+):

6. First screw interior frame to inside of panel with short $\frac{1}{2}$ " (13mm) screws.

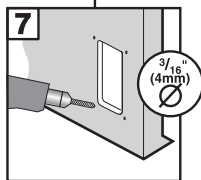
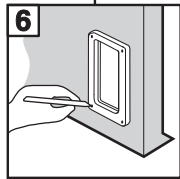
7. Next drill out the 4 screw holes in the exterior frame to allow close clearance on screw. (Recommended drill $\frac{3}{16}$ " (4mm) diameter.)

8. Finally fix exterior frame to exterior of door using $\frac{3}{4}$ " (19mm) screws. When happy with installation cover screw heads with caps supplied.

WALLS

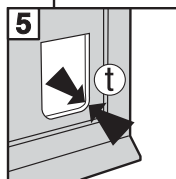
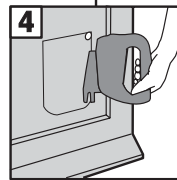
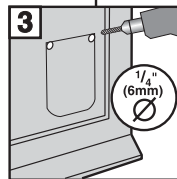
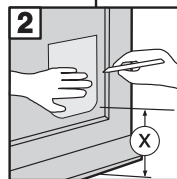
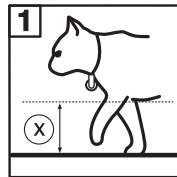
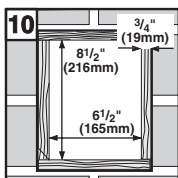
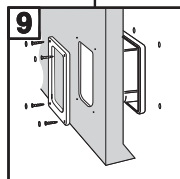
After making a hole in your wall, line with $\frac{3}{4}$ " (19mm) plywood or similar material, as shown in fig. 10. This gives a neat tunnel to the installation and readily accepts the fixing screws.

① 0 - $\frac{7}{8}$ " (0 - 23mm)



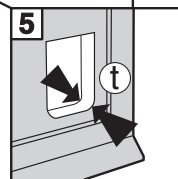
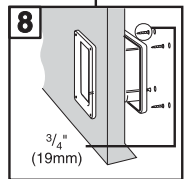
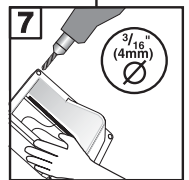
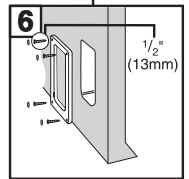
8	t	
0 - $\frac{1}{8}$ " (0 - 4mm)		$\frac{1}{2}$ " (13mm)
$\frac{1}{8}$ " - $\frac{3}{8}$ " (4 - 10mm)		$\frac{3}{4}$ " (19mm)
$\frac{3}{8}$ " - $\frac{5}{8}$ " (10 - 16mm)		1" (25mm)*
$\frac{5}{8}$ " - $\frac{7}{8}$ " (16 - 23mm)		1 $\frac{1}{4}$ " (33mm)

*Screw not supplied



① 0 - $\frac{7}{8}$ " (0 - 23mm)

① $\frac{7}{8}$ " + (24mm +)



① $\frac{7}{8}$ " + (24mm +)

5411/0508